

OPEN.WRX AS

THE controller for efficient system integration

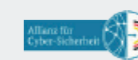
OPEN.WRX AS

Efficient system integration and maximum safety

In the future of building automation, there are some special challenges to be overcome: Due to the shortage of skilled workers in the industry, high work efficiency will be more important than ever in the future. IT security is also becoming more and more important due to the increasing networking in building automation projects, which places ever higher demands on the security of the system. In addition, legal regulations are strongly driving the post-digitalisation of outdated existing buildings. By 2050, the German government wants to reduce the energy demand of existing buildings by 80 percent. The market of the future will therefore be strongly characterised by retrofit projects.

Particularly strong in retrofit projects

The OPEN.WRX (pronounced: OPEN works) controller was explicitly developed to meet these challenges and brings together the classic world of building automation and the new world of Building IoT into an efficient and secure overall system on one hardware platform. With the OPEN.WRX controller, we offer a forward-looking solution for efficient system integration for increasingly complex building automation projects. Despite its compact design, the OPEN.WRX controller has the largest range of integrated interfaces on the market: a total of 4 integrated IP interfaces and 4 integrated serial interfaces make the OPEN.WRX series the best choice in retrofit projects. Because in these projects in particular, it is important to network different systems efficiently with each other in a small amount of space.



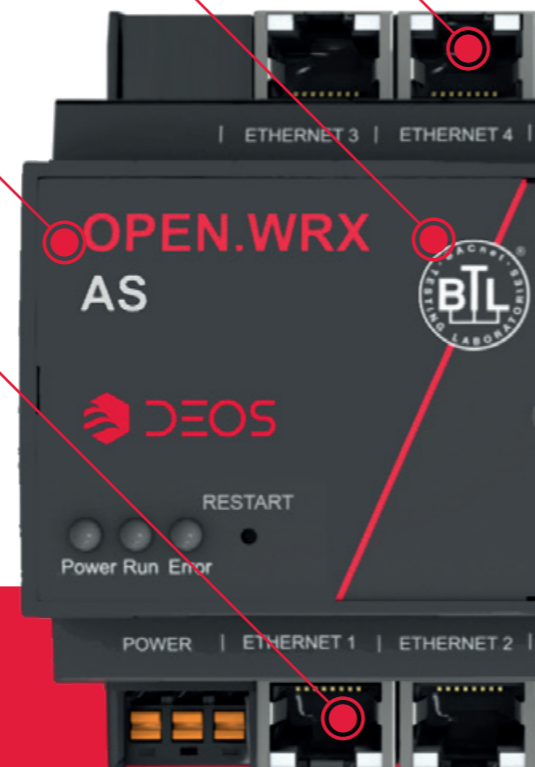
Building IoT ...

Coming soon **Network security**
4 Ethernet interfaces individually (de)activatable, IT/OT separation, integrated VPN

BACnet Secure Connect (B-SCHUB)
Controller be used as BACnet/SC Node, BACnet/SC Primary Hub or BACnet/SC Failover Hub

Cyber security in focus
Crypto chip FIPS certified, audit trail of controller configurations

Coming soon **Building IoT integration**
MQTT and RestAPI



... combined with classic building automation

Increased operational reliability and performance
Secure operation and increased performance for fieldbus integration thanks to dedicated power supply

More interfaces
Up to 4 integrated interfaces for fast and uncomplicated fieldbus integration

Fast and uncomplicated access
Secure access for all tasks throughout the project with no need for time-consuming network configuration

Rapid diagnosis in the field
Via status LEDs or detailed view in the Controller Dashboard



Efficient system integration in 4 steps



Simply flexible

The new licence model provides maximum flexibility for using the OPEN.WRX controller. The main components are global data points that are freely selectable for protocol connections such as BACnet Client, Modbus Master, KNX or M-Bus. Changes to the protocol connections can therefore be implemented flexibly and at any time. Furthermore, it is possible to create smaller connections and connection tests in the project without purchasing data point licences, since 25 of these global data points are already included with the purchase of the OPEN.WRX controller.

Highlights at a glance

- ✓ 4 integrated IP interfaces and 4 integrated serial interfaces (reduces the required gateways to a minimum)
- ✓ Up to 3 integrated Modbus RTU and/or BACnet MS/TP lines can be used in parallel
- ✓ Flexible engineering of protocol connections through global data point licences



Simply safe

World's first BACnet/SC controller

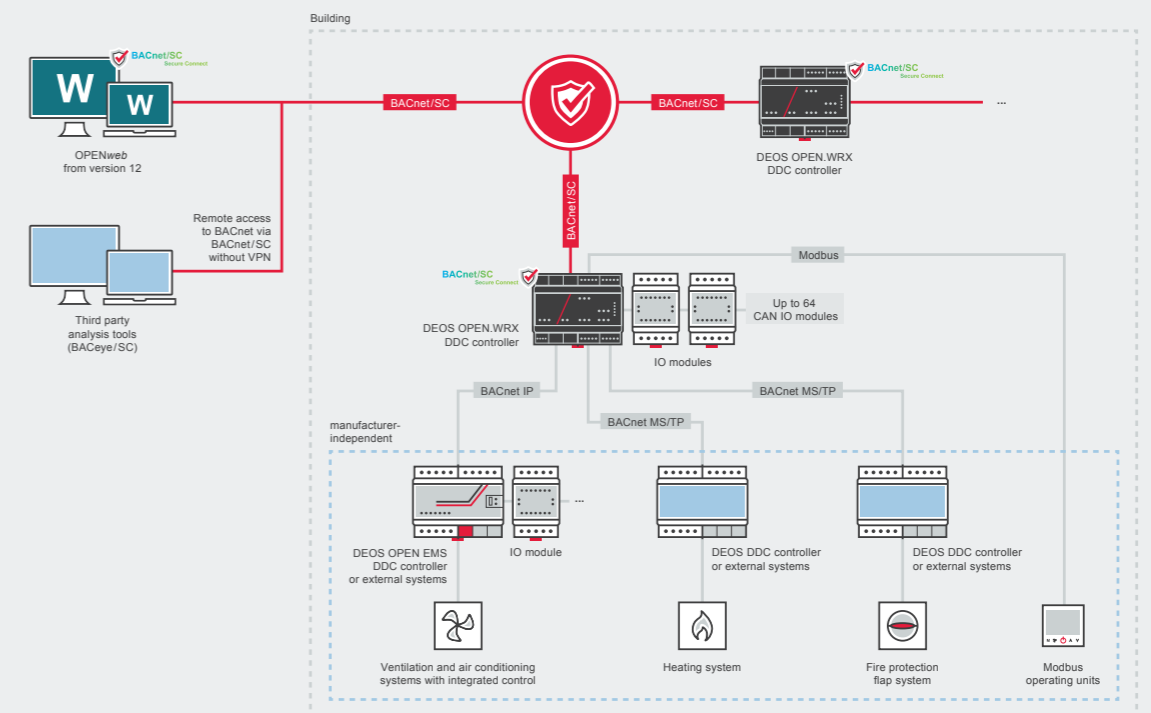
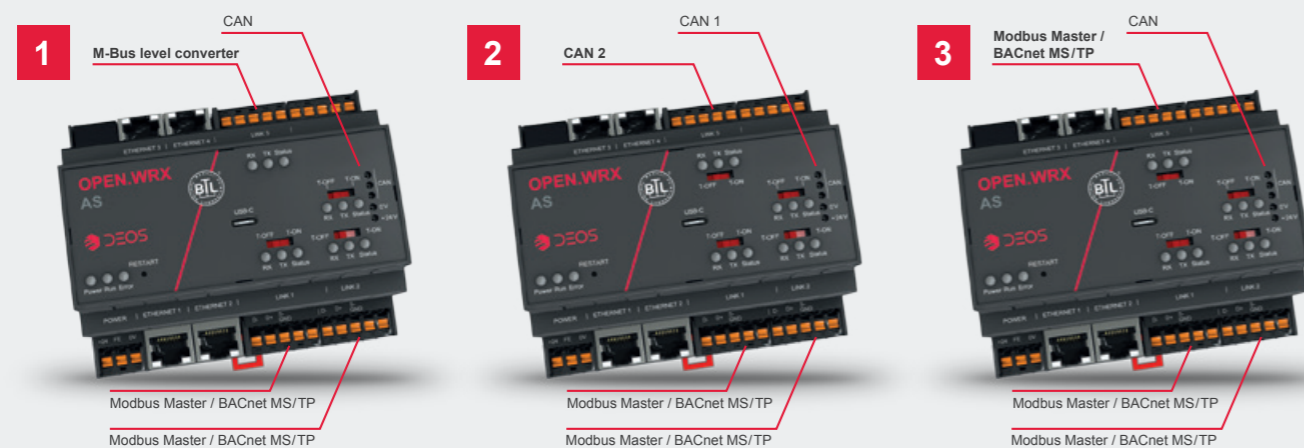
As the first BACnet/SC controller, the OPEN.WRX AS makes it possible to encrypt BACnet networks in order to operate buildings more securely in the future. Particularly in existing buildings with outdated building automation systems, it makes sense to use the OPEN.WRX controller as a BACnet/SC hub and thus secure the entire building automation network via BACnet/SC. BACnet routing from BACnet IP and BACnet MS/TP to BACnet/SC is free of charge. Now you can also encrypt your projects with the new OPEN.WRX AS – building automation has never been so secure.

The increasing networking of systems in buildings requires more and more security for the systems that are used. For building automation, we are now offering the new OPEN.WRX AS – the first BACnet/SC controller and an encrypted and standardised interface protocol, which guarantees maximum security for building automation systems.

- Encryption of building automation systems with BACnet/SC
- Integrated firewall with 3 predefined modes in operation, maintenance, off for a quick and error-free configuration
- Integrated HTTPS encryption for secure access via the web browser
- Audit trail: logging and history of changes for the entire controller configurations



Three variants for flexible system integration





Simply efficient

Efficient working with the OPEN.WRX generation became a top priority due to a lack of qualified specialists. Thanks to the most powerful DDC controller on the market, computing processes are significantly faster, which saves you a lot of time during commissioning. Even in complex SI projects, the OPEN.WRX AS does not even reach its performance limits. The new status dashboard and efficient programming with our libraries also reduce your personnel costs during the project planning stage. OPEN.WRX AS – the controller that saves you time and expense.



USB-C interface

Enables fast loading of the controller (50% faster; saves up to 1.5 h per start-up) as well as quick and easy maintenance and start-up through a separate network via USB-C.



Status Dashboard

The integrated controller status dashboard reduces analysis time to a minimum and ensures maximum transparency.



SI Libraries

Preconfigured libraries including commissioning graphics ensure efficient project planning for BACnet, Modbus, M-Bus and KNX.



Simply compatible

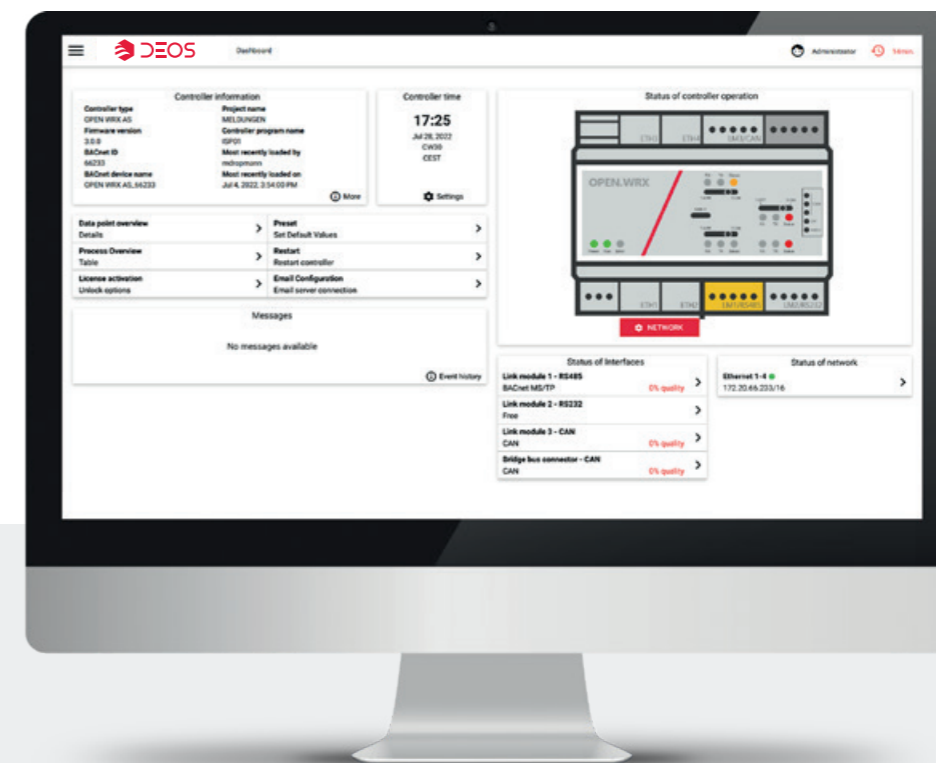
To make using our new controller generation as easy as possible, compatibility of the new system is particularly important to us. This is why we are focusing specifically on compatibility with the existing DEOS portfolio. The OPEN.WRX series is therefore to be regarded as a supplement to the current DEOS system.

- Programmable with well-known DEOS tools such as OPEN FXL 4 and OPENweb (from OPENweb 10)
- Compatible with DEOS macro and template libraries
- Compatible with DEOS CAN IO modules of all generations
- Mixed operation in projects of OPEN EMS controllers and OPEN.WRX controllers
- BACnet controller with full interoperability with other systems – with BACnet/SC now also encrypted



OPEN.WRX Technology Box

- ✓ Configuration and analysis of BACnet/SC connections directly on the controller
- ✓ Free BACnet routing from BACnet IP and BACnet MS/TP to BACnet/SC
- ✓ Up to 64 CAN IO modules can be added without additional licence costs
- ✓ Up to three integrated Modbus RTU and/or BACnet MS/TP lines can be used in parallel
- ✓ Even with complex system integration of e.g. 4,000 data points, the OPEN.WRX is not running at full load
- ✓ Dedicated power provision for serial interfaces
- ✓ Status dashboard significantly reduces analysis times in the area of protocol connections
- ✓ Intuitive user interface for configuring the controller and its interfaces in the SSC
- ✓ Programmable with well-known DEOS tools such as OPEN FXL 4 and OPENweb (from OPENweb 10)
- ✓ Compatible with DEOS CAN IO modules
- ✓ Mixed operation in projects of OPEN EMS controllers and OPEN.WRX controllers





We are part of the Regin Group

The Regin Group is a European manufacturer of intelligent building automation and management systems as well as field products. For more than 75 years, our goal has been to sustainably improve energy efficiency in buildings and facilities through our technical solutions.

Today, the Swedish Regin Group consists of three strong product brands – Regin (S), DEOS (D) and Industrietechnik (IT). With our extensive product portfolio, we create integrated automation solutions – the best of three brands.

DEOS is your regional contact for the entire group portfolio in the DACH region.

For buildings and systems that inspire.



Follow us on social media and stay up to date.



EU 05/25 2nd edition



DEOS AG . Birkenallee 76 . 48432 Rheine . Germany
Tel.: +49 5971 91133-0 . Fax: +49 5971 91133-2999
www.deos-ag.com . info@deos-ag.com

