

Making building automation more secure with BACnet/SC

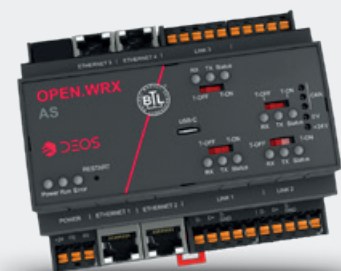
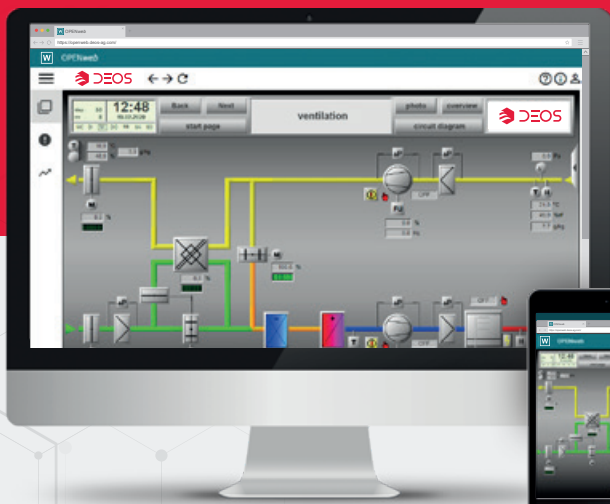
Encrypted communication via BACnet/SC at automation and management level

Everyone knows them – cyber attacks are unfortunately now part of everyday life for many companies. Despite all security measures, attackers manage to penetrate company networks time and again. Once attackers have gained access to a network, all information can often be tapped or influenced, so that in the worst case, communication is no longer possible. Thanks to the new, secure BACnet/SC protocol, these concerns are now a thing of the past: it enables the approximately 25 million BACnet devices installed worldwide to be encrypted thanks to 100% compatibility with the already existing BACnet IP or BACnet MS/TP networks. Complex BBMD configurations, static IP addresses or unencrypted telegrams are now a thing of the past. With BACnet/SC, segments, networks, buildings or even entire properties can be easily and securely interconnected.

Maximum protection thanks to full BACnet/SC integration

In order to protect all important systems and data in the best possible way, DEOS products have been offering an integrated security foundation for years – by design – that is convincing across all levels.

With DEOS, an overall BACnet/SC solution can be realized across any project size. The automation stations and the B-AWS OPENweb can be used and certified for both node connections (simple participants) and hub functionalities (B-SCHUB profile). Furthermore, the necessary certificates for setting up a BACnet/SC network are already integrated in both products.



Features der BACnet/SC Zertifizierung

BACnet/SC functions bundled in one device – can be used as a...

... Node

OPENweb and OPEN.WRX AS can be used as a simple BACnet/SC participant in a BACnet/SC network, allowing seamless insertion into an existing BACnet/SC network.

... Primary Hub

The primary hub is the device in the BACnet/SC network that manages the communication in the network between all BACnet/SC participants. Within each BACnet/SC network, there must be exactly one primary hub.

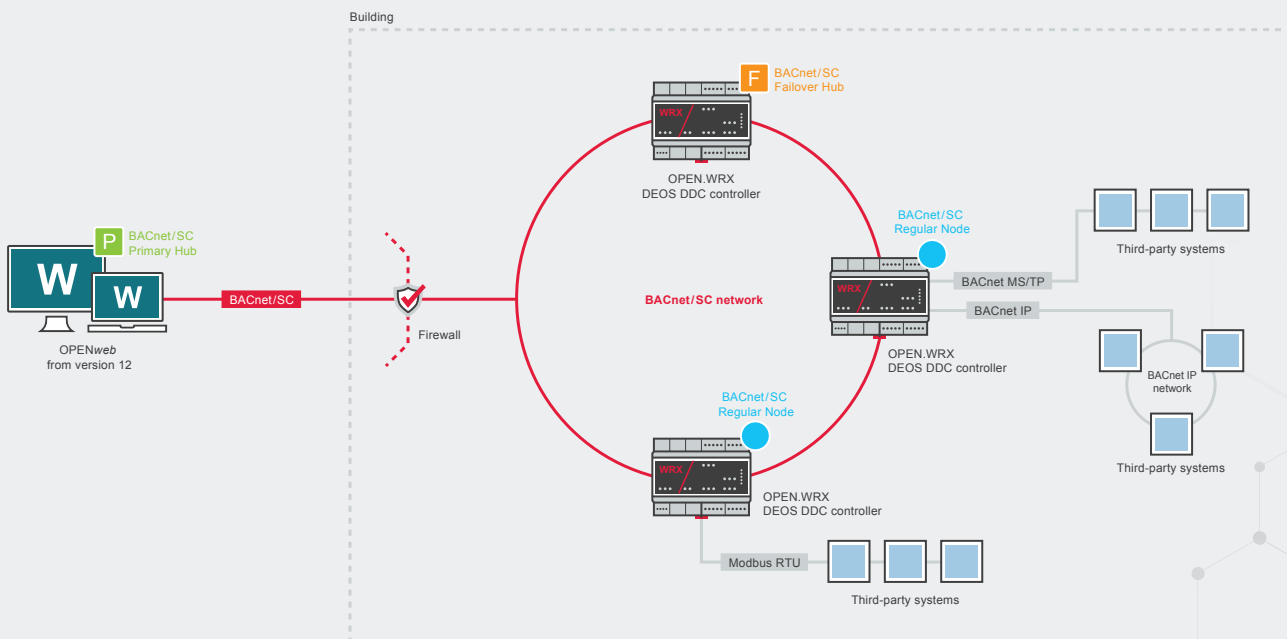
... Router between BACnet IP or MS/TP and BACnet/SC networks

By using the OPEN.WRX, routing from an unencrypted to an encrypted BACnet/SC network is done with just one click. All that is required is to activate BACnet/SC on the OPEN.WRX AS. The programming of BACnet server and BACnet client connections is done as before. Especially due to the 4 integrated Ethernet and the 3 integrated RS485 interfaces, the OPEN.WRX offers even more flexibility when networking BACnet IP and MS/TP devices.

... Failover Hub

The failover hub is the device in the BACnet/SC network that automatically takes over the management of communication in the network if the primary hub fails. In BACnet/SC networks, failover security can be increased in this way. The use of a failover hub is optional in BACnet/SC networks.

Example of setting up a BACnet/SC network with DEOS B-AWS OPENweb and automation station OPEN.WRX AS



Follow us on social media and stay up to date.