



Making building automation more secure with BACnet/SC

Encrypted communication via BACnet/SC at automation and management level

Following the BACnet/SC certified automation station (OPEN.WRX AS), the DEOS BMS OPENweb has now also been certified for BACnet Secure Connect (BACnet/SC). This makes DEOS one of the few and first measuring and control solution manufacturers worldwide to offer a complete BACnet/SC solution.

BACnet/SC marks the beginning of a new era in modern IT infrastructure. As a result, it is finally possible to encrypt the approximately 25 million BACnet devices installed worldwide thanks to 100 % compatibility with the already existing BACnet IP or BACnet MS/TP networks. Complex BBMD configurations, static IP addresses or unencrypted telegrams are now a thing of the past. With BACnet/SC, segments, networks, buildings or even entire properties can be easily and securely interconnected.

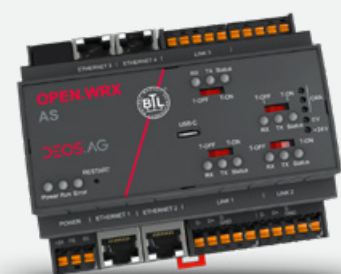
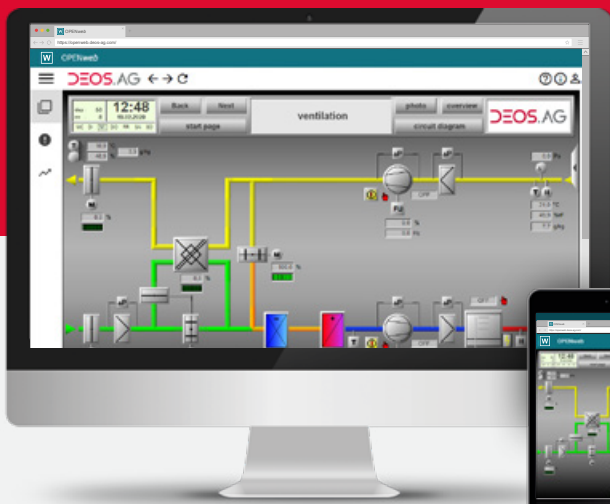
Designed to be compatible with the B-SCHUB profile

The DEOS team of experts is proud to be pioneers and to offer the first controller worldwide with a BACnet/SC certification. For DEOS, the focus has always been on standardised networking via BACnet, which simultaneously offers a high level of interoperability.

We have therefore implemented the entire range of BACnet/SC functions including:

- BACnet/SC Node
- BACnet/SC Primary Hub & Failover Hub

Hub functionality is also ensured through compatibility of OPEN.WRX AS and OPENweb with the new BACnet profile BACnet Secure Connect Hub (B-SCHUB).



Features der BACnet/SC Zertifizierung

BACnet/SC functions bundled in one device – can be used as a...

... Node

OPENweb and OPEN.WRX AS can be used as a simple BACnet/SC participant in a BACnet/SC network, allowing seamless insertion into an existing BACnet/SC network.

... Primary Hub

The primary hub is the device in the BACnet/SC network that manages the communication in the network between all BACnet/SC participants. Within each BACnet/SC network, there must be exactly one primary hub.

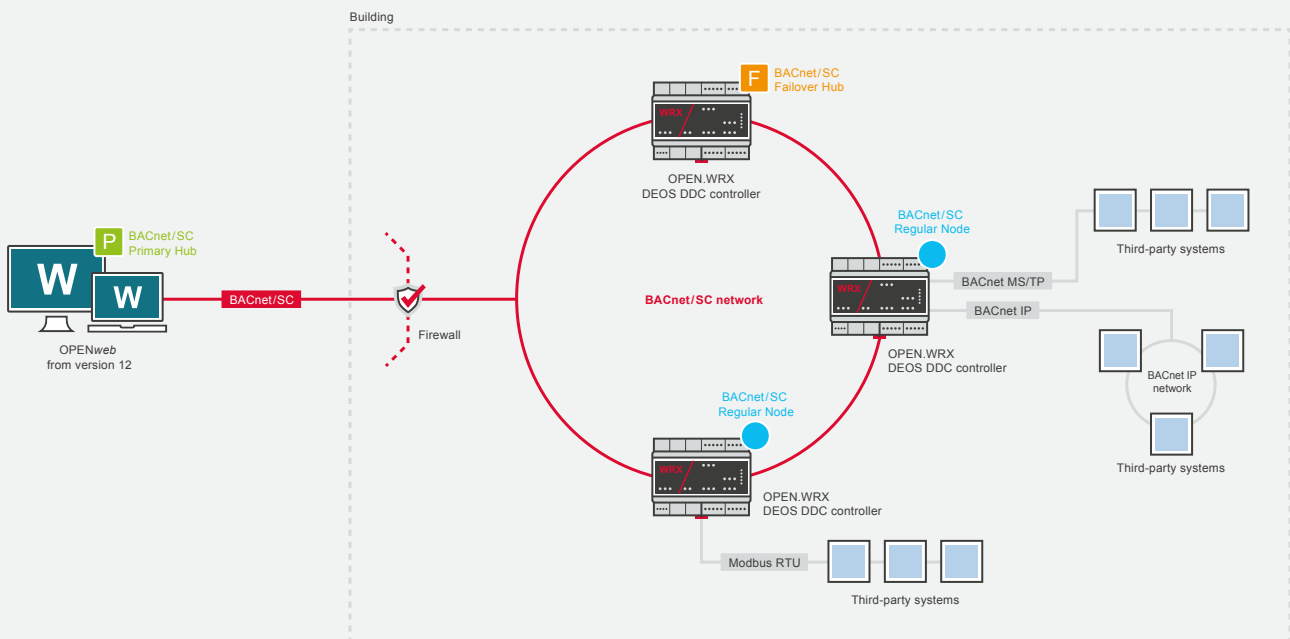
... Router between BACnet IP or MS/TP and BACnet/SC networks

By using the OPEN.WRX, routing from an unencrypted to an encrypted BACnet/SC network is done with just one click. All that is required is to activate BACnet/SC on the OPEN.WRX AS. The programming of BACnet server and BACnet client connections is done as before. Especially due to the 4 integrated Ethernet and the 3 integrated RS485 interfaces, the OPEN.WRX offers even more flexibility when networking BACnet IP and MS/TP devices.

... Failover Hub

The failover hub is the device in the BACnet/SC network that automatically takes over the management of communication in the network if the primary hub fails. In BACnet/SC networks, failover security can be increased in this way. The use of a failover hub is optional in BACnet/SC networks.

Example of setting up a BACnet/SC network with DEOS B-AWS OPENweb and automation station OPEN.WRX AS



Follow us on social media and stay up to date.