

**Up to 90% faster
system programming**

Approximately 10 minutes of
programming per data point*

Easy Engineering

Programming tools for successful building automation

The key to success is efficiency in the project. We help you achieve this with our engineering tools for fast and error-free programming, thus reducing your efforts. The DEOS programming tools offer you pre-configured macros, templates with entire HVAC systems and system integrations, automation of repetitive work steps and a practice-oriented user interface.

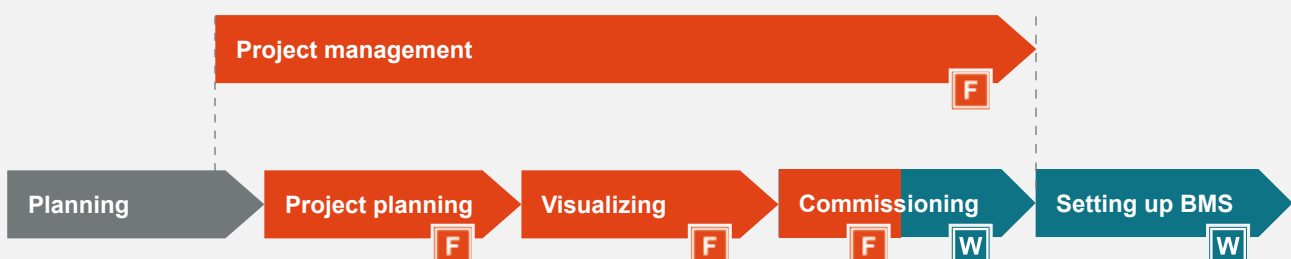
*** Your time is precious – reduce your efforts by up to 90% with the DEOS programming tools. For project sizes of 1,000 to 1,500 data points, you need an average of about 10 to 11 minutes per data point with DEOS. See for yourself!**

OPEN FXL programming tool

OPEN FXL is the central tool for complete and time-saving system programming. With the graphic programming tool, you can programme your systems freely according to your individual project requirements. This offers you maximum flexibility and forms the powerful basis for convenient, fast and safe system programming. Perform three essential engineering tasks with the help of OPEN FXL: Project planning, visualisation and commissioning.

Macro and template library

With graphic programming and our macro and template library, you can reach your goal quickly and without errors. Pre-programmed and tested system modules (macros) and ready-made HVAC systems (templates) reduce your programming efforts enormously. You can edit the DEOS libraries, modify them according to your own requirements and add your own programmed system modules.



OPEN FXL

Central tool for all programming tasks



In our programming tools, we place particular emphasis on functions that make your daily work easier and save you valuable time.

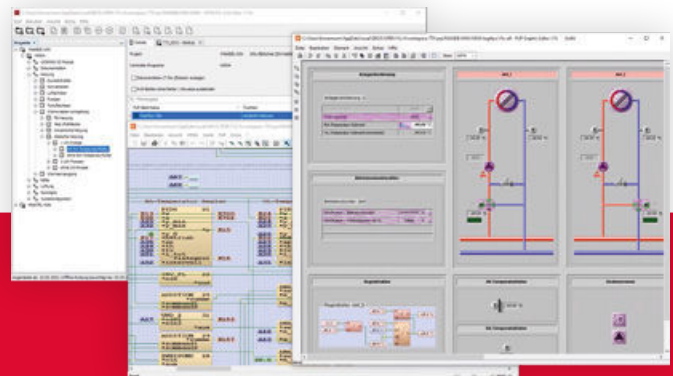
The engineering procedure with DEOS is always the same: Insert macros incl. graphics, pre-configure, load controllers – and all this with just a few clicks. Regardless of whether it's system automation, room automation or system integration.

In contrast to other engineering tools, the management and user interface including system graphics, navigation structure, password level, help for commissioning and online documentation is prefabricated in the DEOS macros. This user interface is automatically completed for both the controller and the BMS and is suitable for later operation of the system.

DEOS also saves you valuable time during the function test of the entire system thanks to the well thought-out commissioning graphics – this also applies to the commissioning of system integrations.

The OPEN FXL offers you the following additional time-saving features:

- Excel import of your data point lists saves you manual input and reduces the susceptibility to errors.
- Pre-prepared password level for different roles for system operation
- Automatic creation of online documentation of your used controls with live values incl. print and export function
- Backup function for uncomplicated project handover



3 user groups – 1 engineering tool

For technicians

- Fully comprehensive engineering tool for all project planning, commissioning and maintenance tasks in DEOS applications
- From the use of DEOS libraries up to free programming

For macro developers

- Create and manage your own libraries, plug-ins and scripts for specific applications or tasks.
- Create and manage your own graphics for the visualisation of system sections and entire systems
- Adapt DEOS macro libraries to individual requirements

For tool developers

- API with integrated web interface for the connection of specially programmed tools.
- Optimise individual requirements and processes with the help of their own tools