



## Powerful open system solution

### BACnet compact controller OPEN 600 EMS basic24

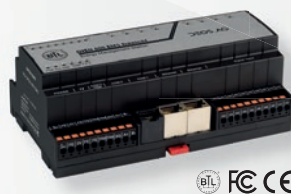
The new product version is based on the OPEN 600 EMS (DDC) and is a cost-effective controller designed for small HVAC systems. This DDC is also perfect for use as a BACnet single room unit. The controller features 24 integrated digital and analog inputs and outputs and an ideal economical design for these applications.

Thanks to the communication via BACnet IP, this controller is the perfect choice for use in both existing buildings and properties as well as in new projects. The secure remote access and remote monitoring via the integrated graphic HTML5 web server make it easy to operate HVAC systems and individual rooms. The representations are rendered in FULL HD resolution as usual.

- ✓ For small HVAC systems - as a stand-alone as well as an integrated controller and single room controller
- ✓ Cost-effective BACnet compact controller with analog and digital IOs
- ✓ Including full HD graphic HTML5 web server with BMS functions
- ✓ Programming is up to 60% faster via the DEOS FUP XL project planning software
- ✓ Ideal for existing buildings and properties as well as in new projects
- ✓ BTL-listed (profile B-BC) as well as AMEV attestation (profile B)

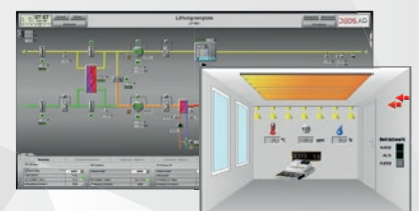


**Secure remote access via the Internet web server**



**OPEN 600 EMS basic24**

BACnet  
 MODBUS  
 KNX  
 M-Bus



**For small HVAC systems and BACnet single room controller**

## Powerful open system solution BACnet compact controller OPEN 600 EMS basic24

The **OPEN 600 EMS basic24** (DDC) uses the system openness of the entire DEOS OPEN EMS platform (BMS, energy management, etc.) and is seamlessly integrated into the DEOS overall concept for intelligent buildings.

The OPEN 600 EMS basic24 is designed as a native **BACnet building controller (B-BC)** for use in a wide range of areas, including hotels, office buildings, universities and museums, etc.

Native  
**BACnet**  
BTL-certified (B-BC profile)

The systems equipped **with BMS functions** are operated **using graphics** (in full HD) via the integrated OPENview web server. The HTML5-based technology lets you use any browser and mobile device.

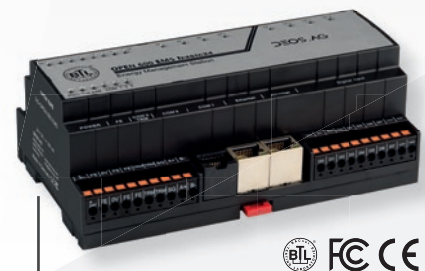
Graphic operation:  
**OPENview**  
intuitive operation

The free programming provides you with maximum flexibility in your project. At the same time, we offer you a comprehensive macro library and pre-tested templates for cost-saving project planning.

Use of  
**Macros & Templates**  
from the DEOS libraries

### Technical highlights

- 24 onboard integrated inputs and outputs
- BACnet IP and MS/TP support
- Up to 250 BACnet objects
- Protocols: BACnet, M-Bus, MODBUS, KNX, ...
- Interfaces: 2xRJ45, RS232, RS485
- Integrated 2nd Ethernet port for easy serial wiring (daisy chain)
- Freely configurable status LEDs (red/green)
- SMS and e-mail dispatch directly from controller
- Documentation directly on the controller



**OPEN 600 EMS basic24**

- 8 analog & 8 digital inputs
- 4 analog & 4 digital outputs